

Guimaraes-Souto *et al.* 2021. Do tropical riparian forests in the Cerrado Biome act as a buffer against the impacts of agriculture and livestock on benthic macroinvertebrate communities? *Limnetica* 40(2), 2021: 329-342

## SUPPLEMENTARY INFORMATION

Figure S1. Land use adjacent to the riparian vegetation of Cascatinha stream (P1) - natural vegetation. *Uso da terra adjacente à vegetação ribeirinha do córrego Cascatinha (P1) - vegetação natural.*

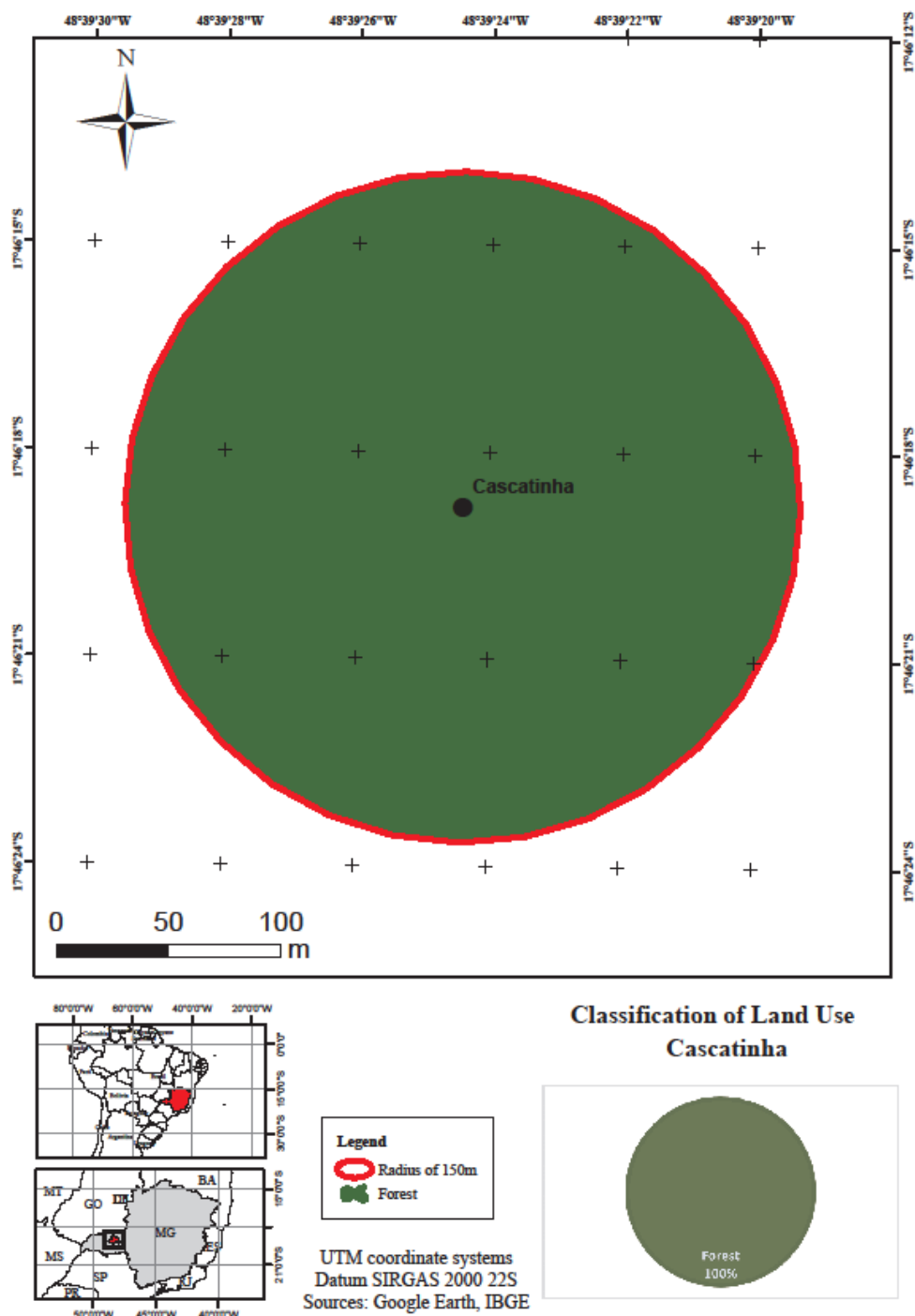
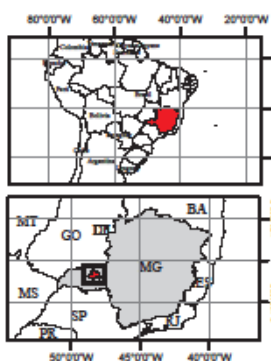
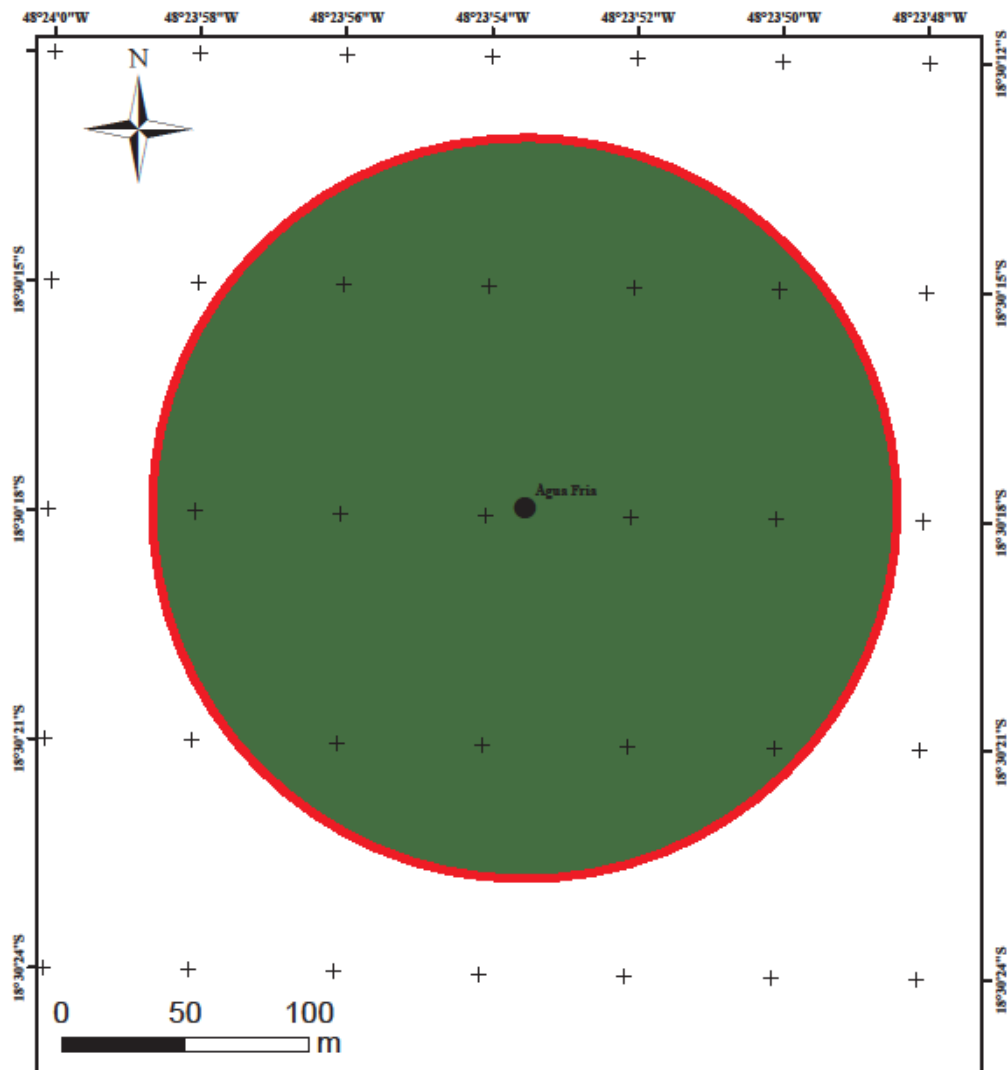
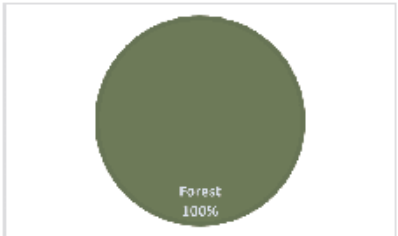
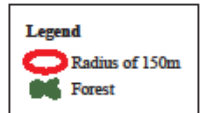


Figure S2. Land use adjacent to the riparian vegetation of Água Fria stream (P2) - natural vegetation. *Uso da terra adjacente à vegetação ribeirinha do córrego Água Fria (P2) - vegetação natural.*



**Classification of Land Use  
Água Fria**



UTM coordinate systems  
 Datum SIRGAS 2000 22S  
 Sources: Google Earth, IBGE

Figure S3. Land use adjacent to the riparian vegetation of Marimbondo stream (P3) - natural vegetation. *Uso da terra adjacente à vegetação ribeirinha do córrego Marimbondo (P3) - vegetação natural.*

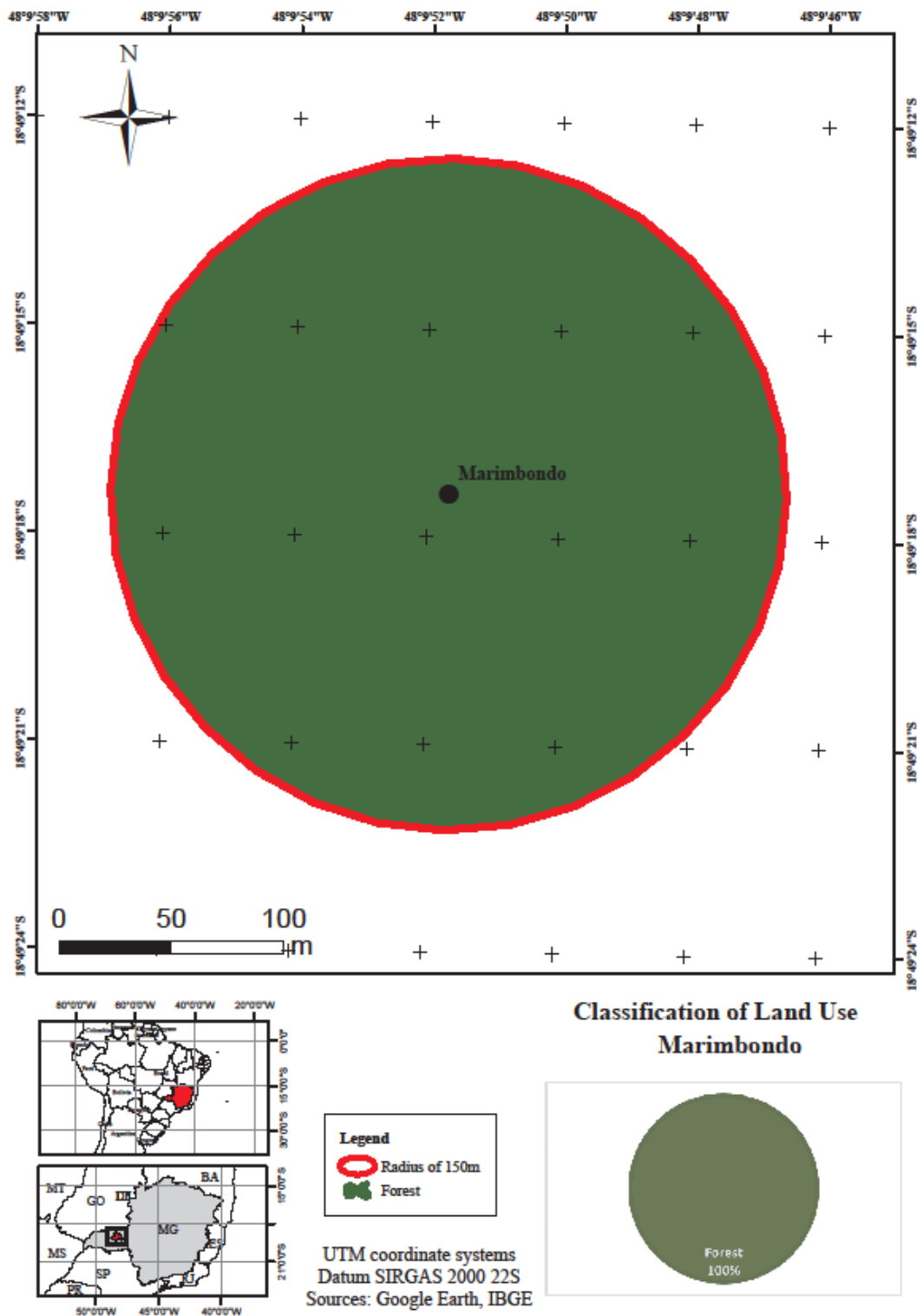
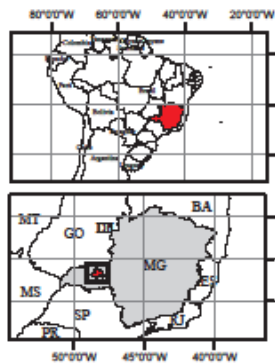
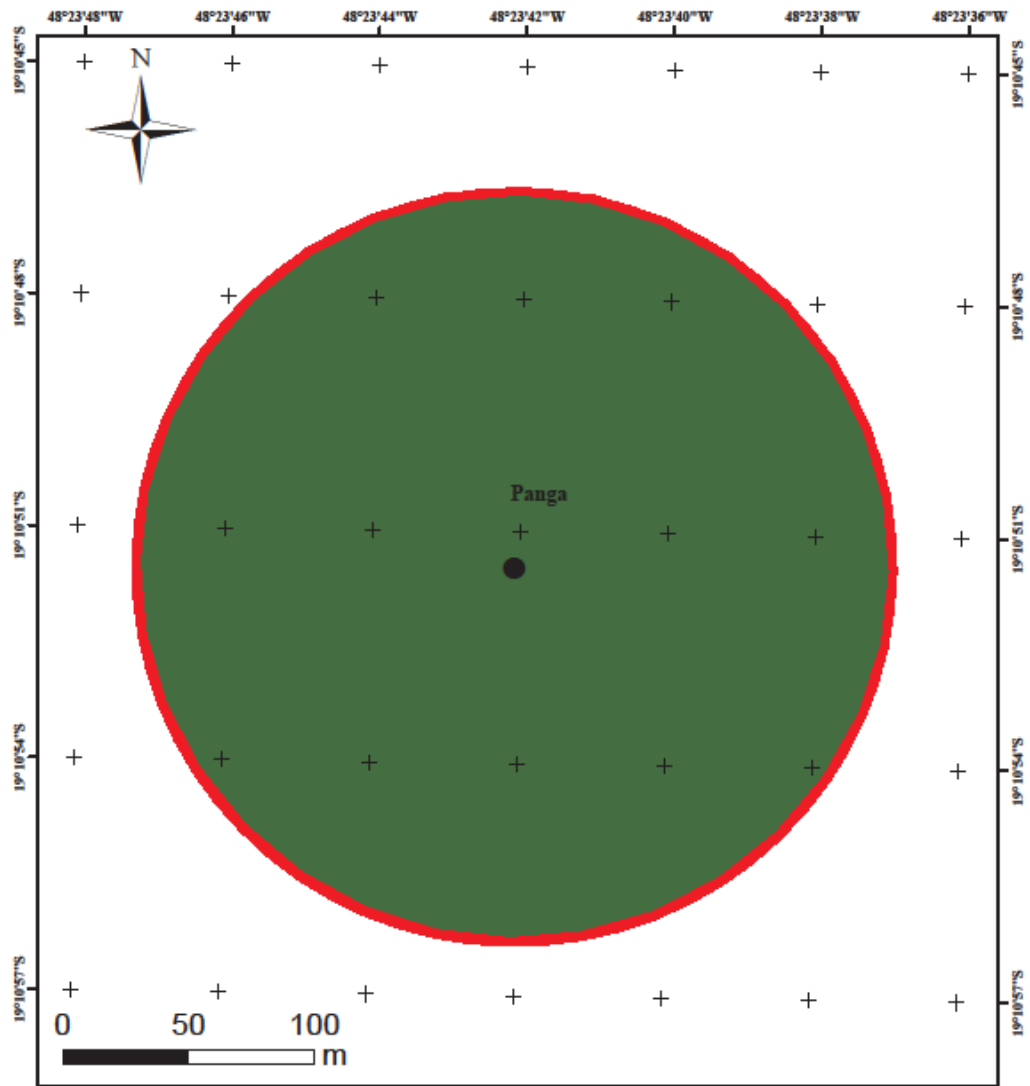


Figure S4. Land use adjacent to the riparian vegetation of Panga stream (P4) - natural vegetation. *Uso da terra adjacente à vegetação ribeirinha do córrego Panga (P4) - vegetação natural.*



UTM coordinate systems  
 Datum SIRGAS 2000 22S  
 Sources: Google Earth, IBGE

### Classification of Land Use Panga

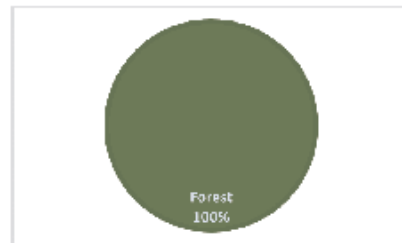


Figure S5. Land use adjacent to the riparian vegetation of Uberaba stream (P5) - natural vegetation. *Uso da terra adjacente à vegetação ripária do córrego Uberaba (P5) - vegetação natural.*

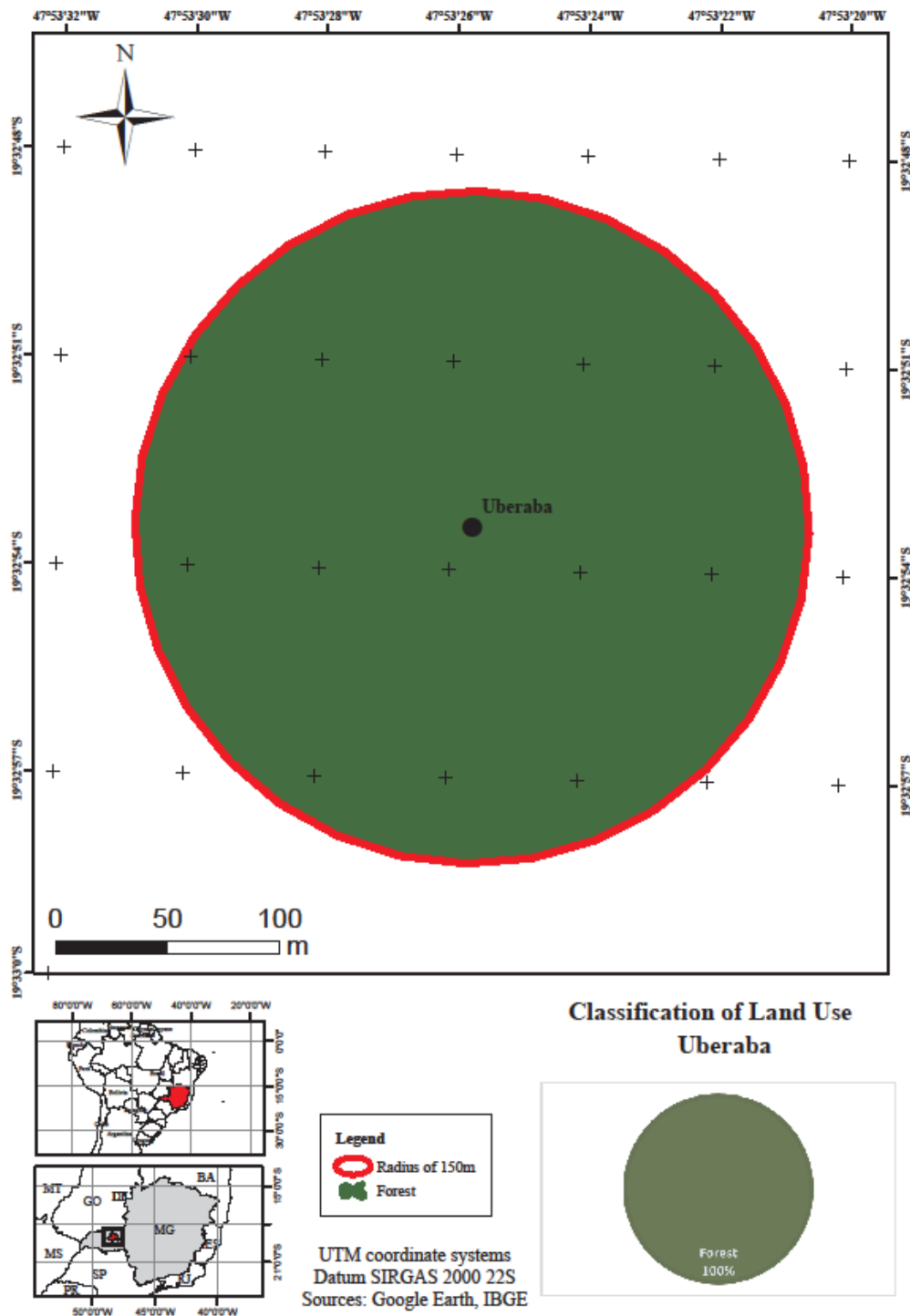


Figure S6. Land use adjacent to the riparian vegetation of Corredeira stream (P6) - pasture area. *Uso da terra adjacente à vegetação ribeirinha do córrego da Corredeira (P6) - área de pastagem.*

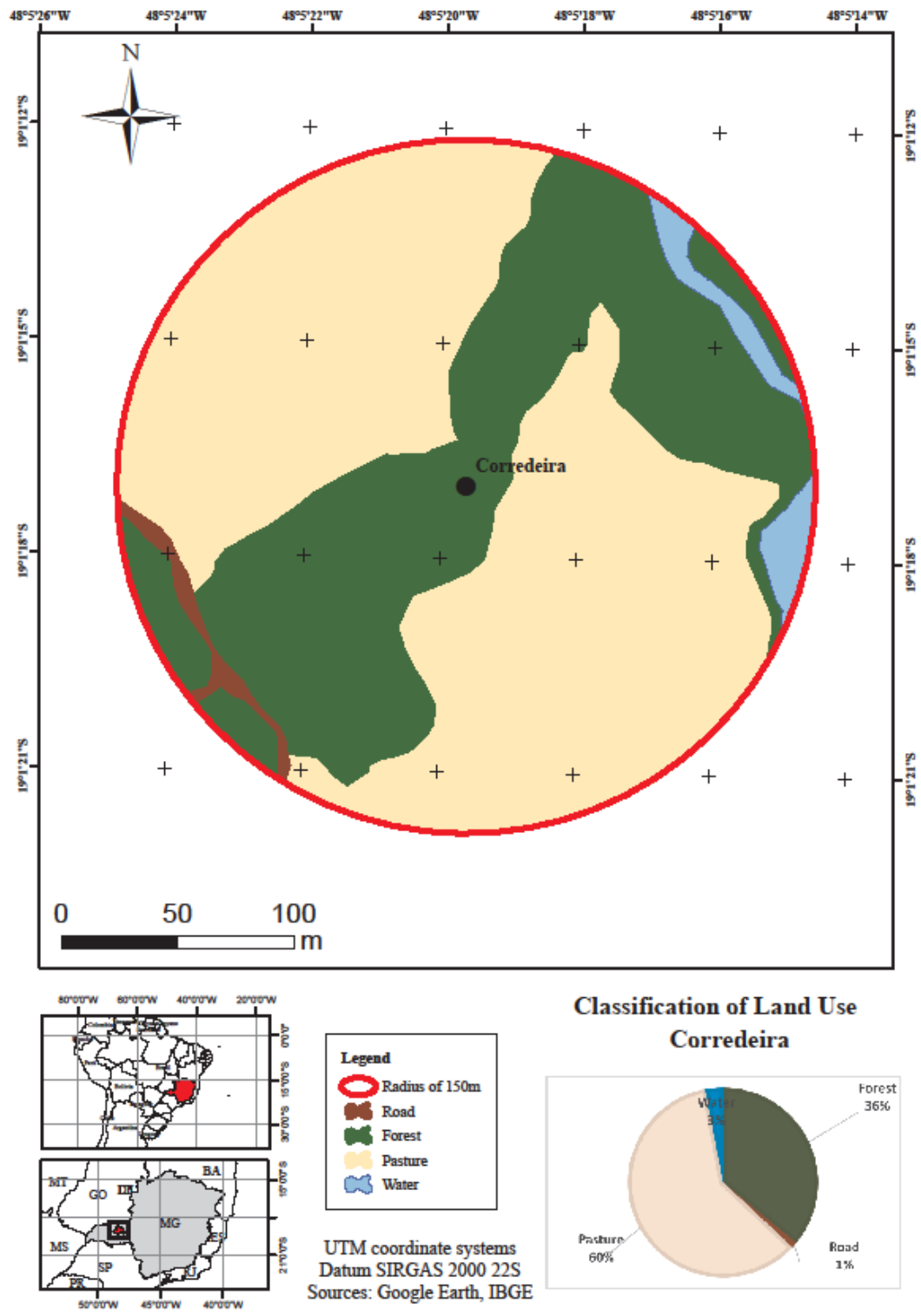
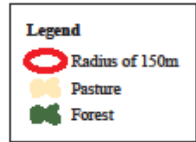
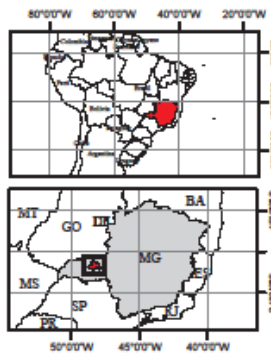
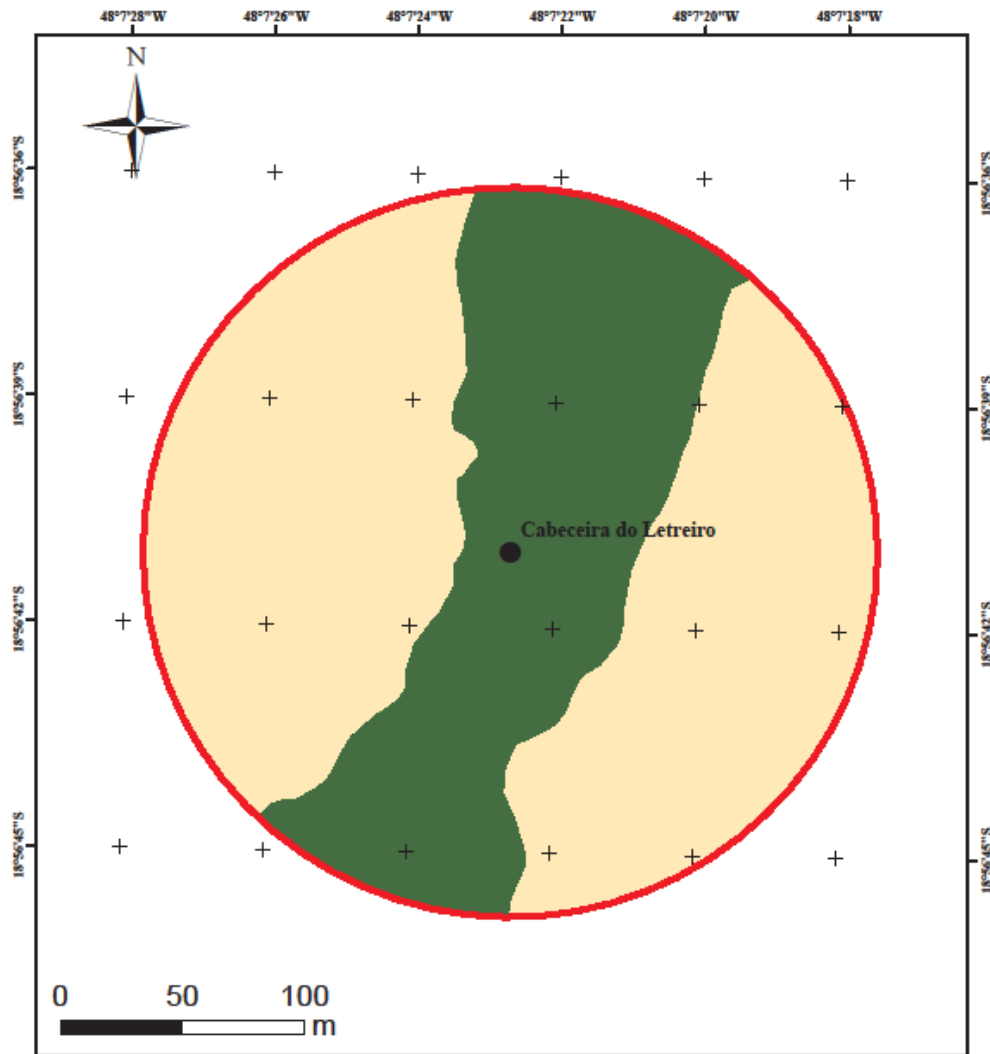


Figure S7. Land use adjacent to the riparian vegetation of Cabeceira do Letreiro stream (P7) - pasture area. *Uso da terra adjacente à vegetação ribeirinha do córrego Cabeceira do Letreiro (P7) - área de pastagem.*



UTM coordinate systems  
Datum SIRGAS 2000 22S  
Sources: Google Earth, IBGE

**Classification of Land Use  
Cabeceira do Letreiro**

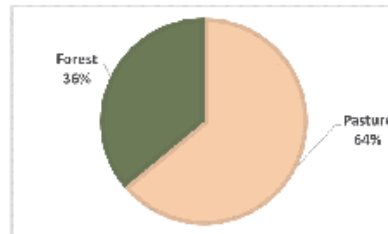
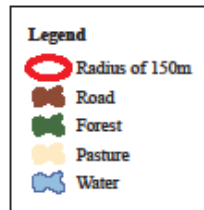
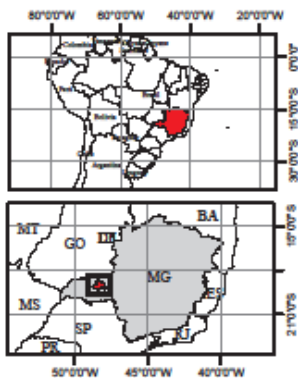
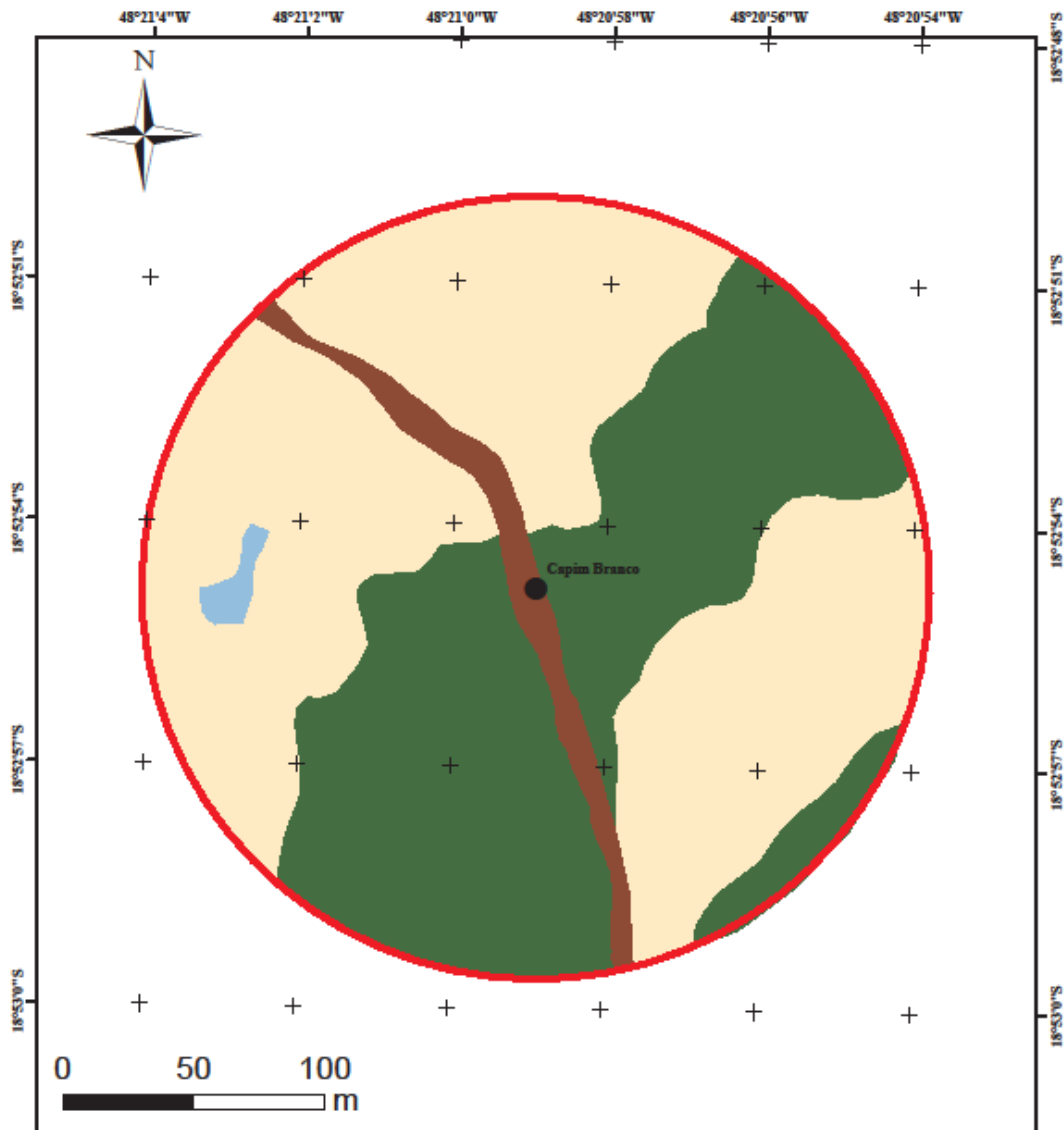


Figure S8. Land use adjacent to the riparian vegetation of Capim Branco stream (P8) - pasture area. *Uso da terra adjacente à vegetação ribeirinha do córrego Capim Branco (P8) - área de pastagem.*



UTM coordinate systems  
Datum SIRGAS 2000 22S  
Sources: Google Earth, IBGE

### Classification of Land Use Capim Branco

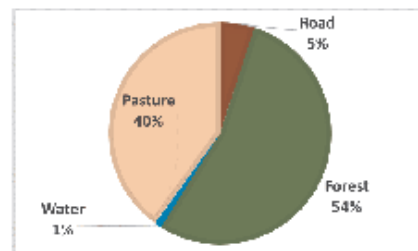
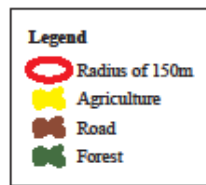
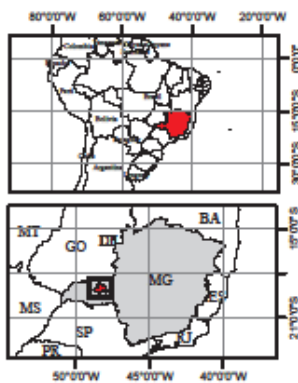
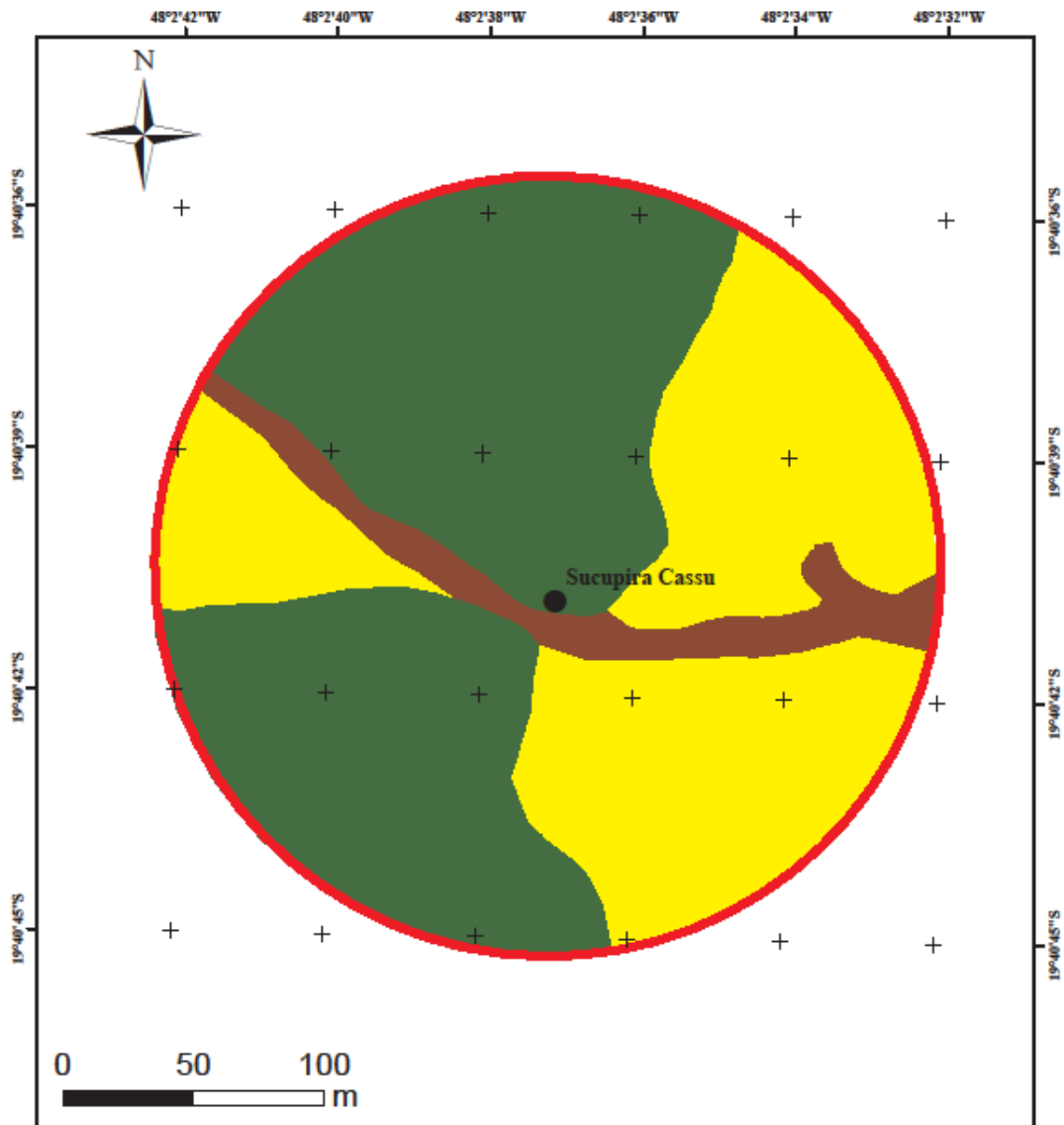




Figure S9. Land use adjacent to the riparian vegetation of Sucupira Cassu stream (P9) - agriculture area. *Usa da terra adjacente à vegetação ribeirinha do córrego Sucupira Cassu (P9) - área agrícola.*



UTM coordinate systems  
Datum SIRGAS 2000 22S  
Sources: Google Earth, IBGE

### Classification of Land Use Sucupira Cassu

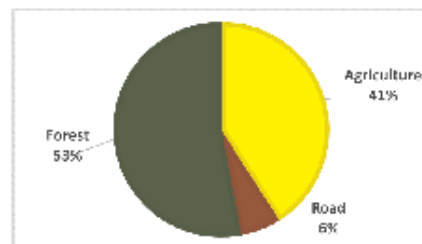


Figure S10. Land use adjacent to the riparian vegetation of Bugre stream (P10) - agriculture area. *Uso da terra adjacente à vegetação ribeirinha do córrego Bugre (P10) - área agrícola.*

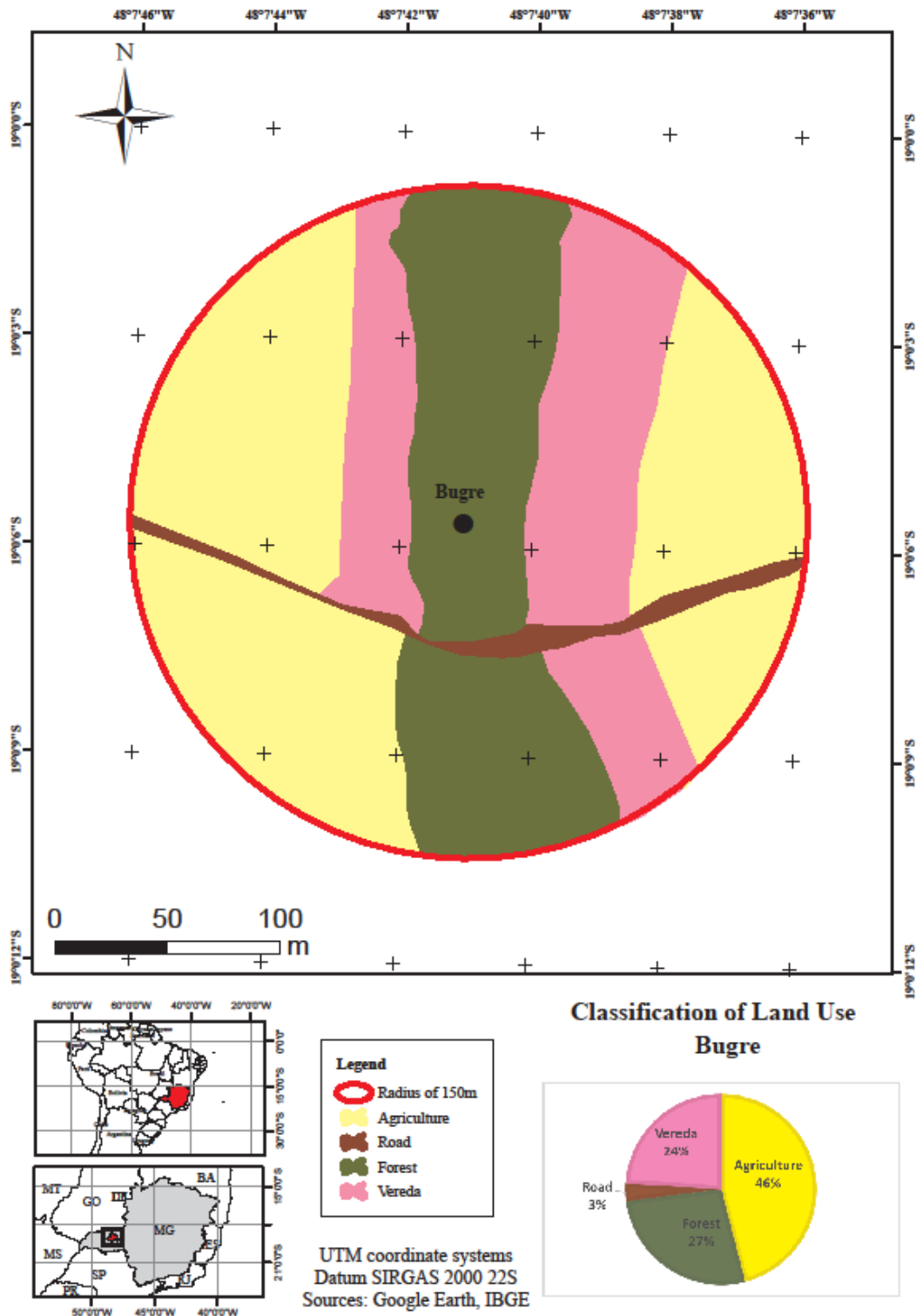


Figure S11. Land use adjacent to the riparian vegetation of Fortaleza stream (P11) - agriculture area. *Uso da terra adjacente à vegetação ribeirinha do córrego de Fortaleza (P11) - área agrícola.*

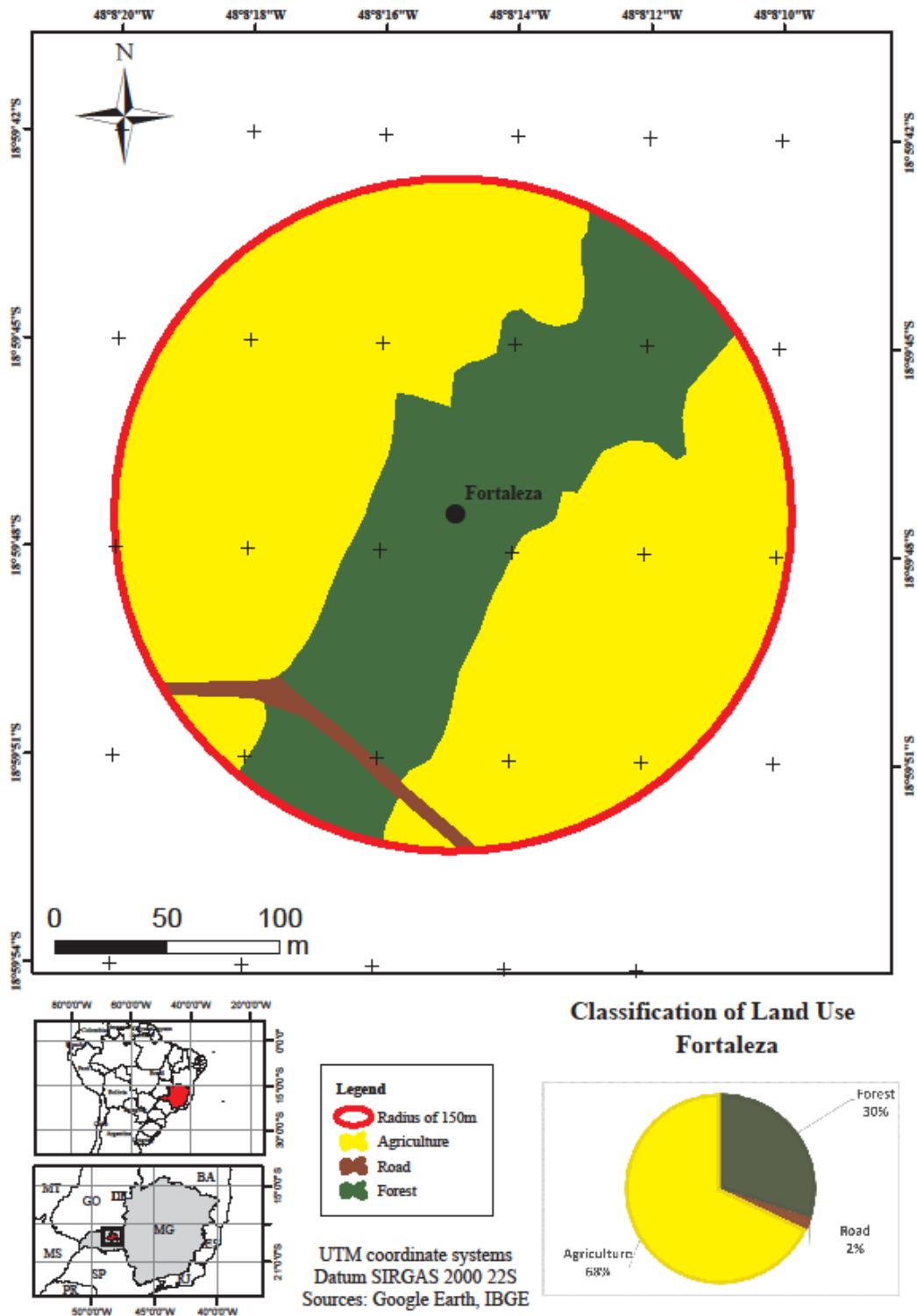
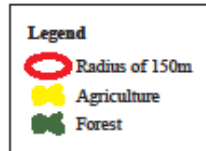
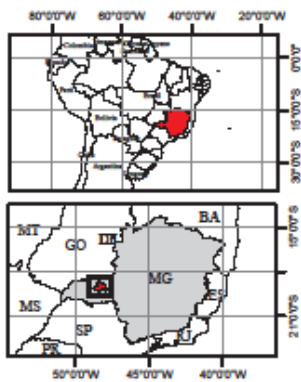
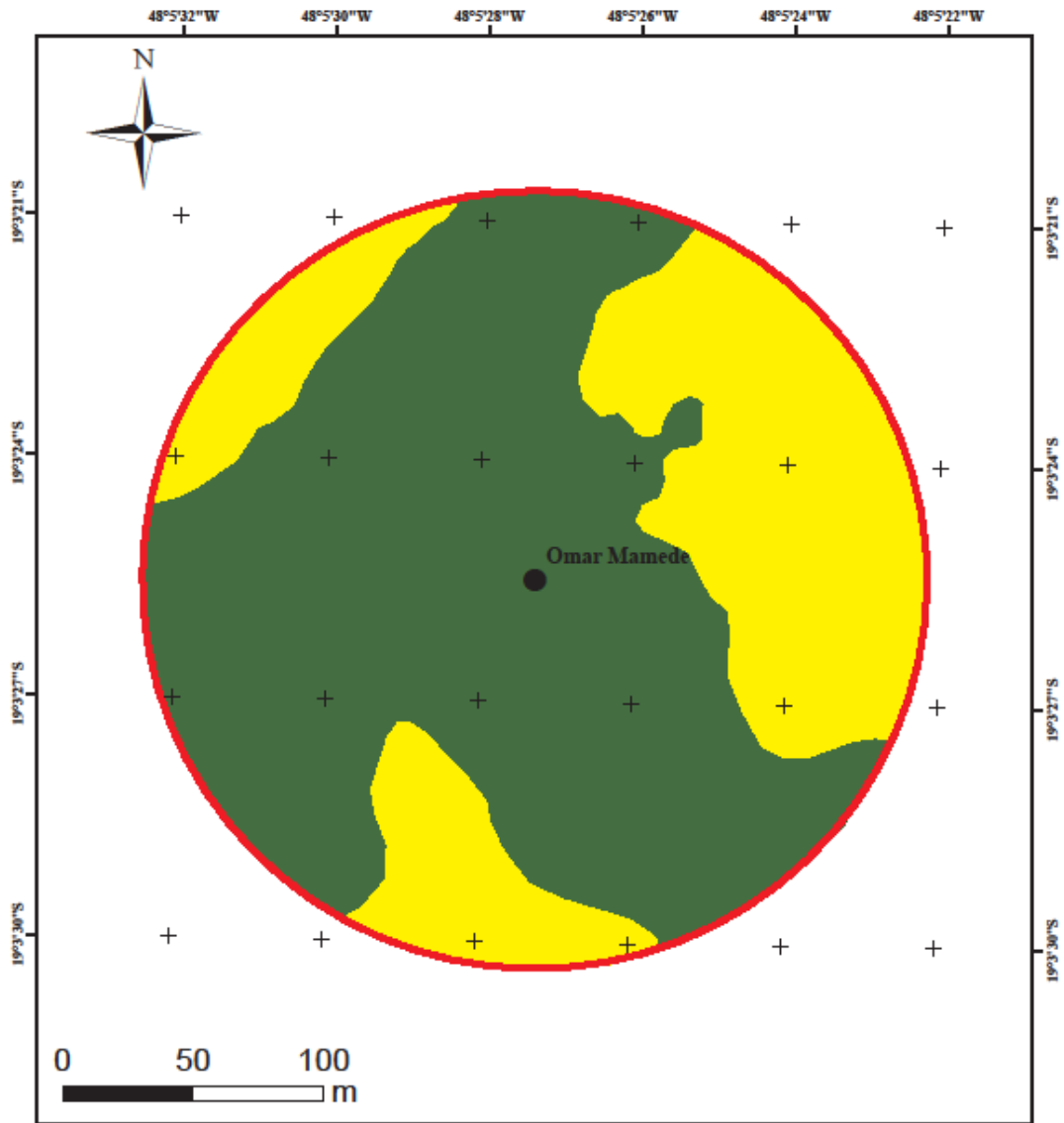


Figure S12. Land use adjacent to the riparian vegetation of Sucupira Cassu stream (P12) - agriculture area. *Usa da terra adjacente à vegetação ribeirinha do córrego Sucupira Cassu (P12) - área agrícola.*



UTM coordinate systems  
Datum SIRGAS 2000 22S  
Sources: Google Earth, IBGE

### Classification of Land Use Omar Mamede

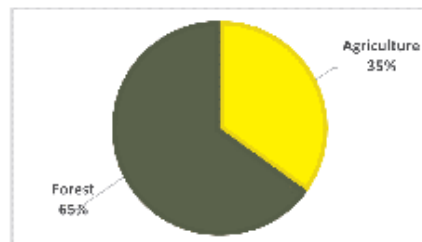


Figure S13. Land use adjacent to the riparian vegetation of Fortaleza II stream (P13) - agriculture area. *Uso da terra adjacente à vegetação ripária do córrego Fortaleza II (P13) - área agrícola.*

